



GANDER
— GOLD —

CSE:**GAND** | OTCQB: **GANDF** | [GanderGold.com](https://www.GanderGold.com)

***All Newfoundland.
All the time.***

***“A Driving Force in the
Newfoundland Gold Rush”***



■ April 27, 2023



Forward Looking Statements

Investors are cautioned that, except for statements of historical fact, certain information contained in this document includes “forward looking information”, with respect to a performance expectation for Gander Gold Corporation. Such forward looking statements are based on current expectations, estimates and projections formulated using assumptions believed to be reasonable and involving a number of risks and uncertainties which could cause actual results to differ materially from those anticipated. Such factors include, without limitation, fluctuations in foreign exchange markets, the price of commodities in both the cash market and futures market, changes in legislation, taxation, controls and regulation of national and local governments and political and economic developments in Canada and other countries where Gander Gold Corp. carries out or may carry out business in the future, the availability of future business opportunities and the ability to successfully integrate acquisitions or operational difficulties related to technical activities of mining and reclamation, the speculative nature of exploration and development of mineral deposits, including risks obtaining necessary licenses and permits, reducing the quantity or grade of reserves, adverse changes in credit ratings, and the challenge of title. The Company does not undertake an obligation to update publicly or revise forward looking statements or information, whether as a result of new information, future events or otherwise, unless so required by applicable securities laws. Some of the results reported are historical and may not have been verified by the Company.

Qualified Person

The technical information in this presentation has been reviewed and approved by Mr. Ian Fraser, P.Geo., VP Exploration for Gander Gold Corp. Mr. Fraser is the Qualified Person responsible for the scientific and technical information contained herein under National Instrument 43-101 standards.



2,259
sq. km

*Dominant Land
Position*

15 KM

*East of NFG's Keats
Zone Discovery*

52%

of 91.5 Million
*shares owned by Sassy
and Eric Sprott*

About Gander Gold. Going for Gold.

Gander Gold Corp. is led by an entrepreneurial group of exploration, mining and capital markets specialists determined to create shareholder wealth through new discoveries in Canada's hottest new gold district.

*Listed on the CSE in March 2022, **GAND** is a well-financed "Pure Play" Newfoundland gold company with Sassy Gold (CSE:SASY) and Eric Sprott owning just over 50% of the issued and outstanding shares.*

- **Dominant land position** of 2,259 sq. km with early success and momentum at large Gander North Project*
- **Early mover advantage** – all 8 major claim blocks were carefully assessed and acquired prior to the start of the Gold Rush in 2021*
- **Strategic partnerships** with Shawn Ryan, Canada's most famous prospector, and GroundTruth Exploration*
- **A proven Newfoundland method** of discovery and the right people on the ground to drive new high-grade gold discoveries across the Island*
- **Accomplished management team** and Board of Directors who have excelled at the senior producer and junior exploration levels*

Gander Gold Share Structure

As of **March 31, 2023**

Total Outstanding

91,543,717

Options

3,450,000 (\$0.25, Nov & Dec 2026)

Warrants

701,742 (\$0.32, Sept 2023)

Fully Diluted

95,695,459

Largest Shareholders

Sassy Gold

35,328,732 @ (38.3%)

Eric Sprott

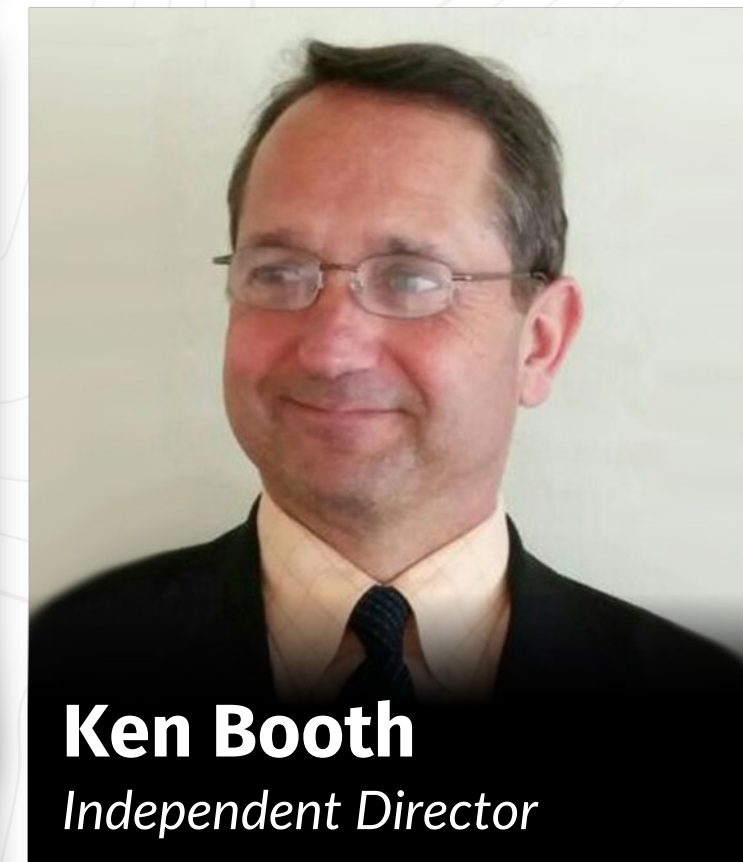
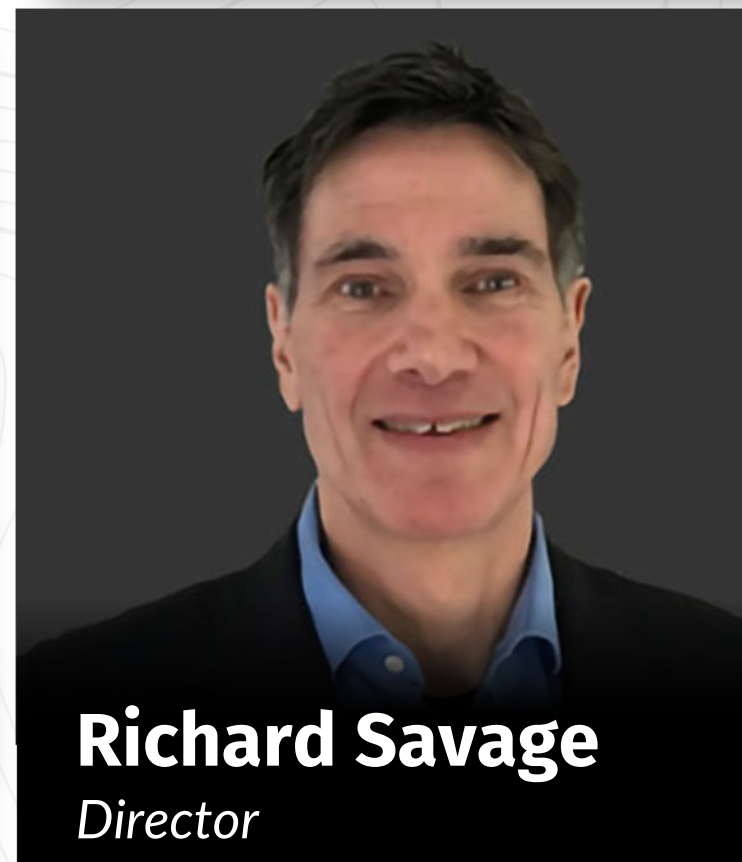
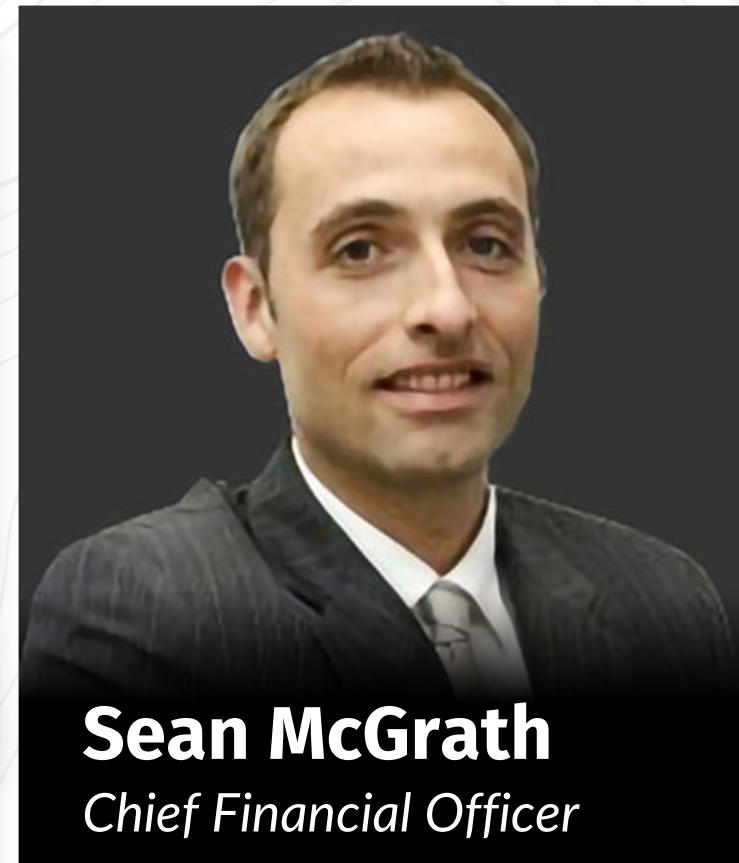
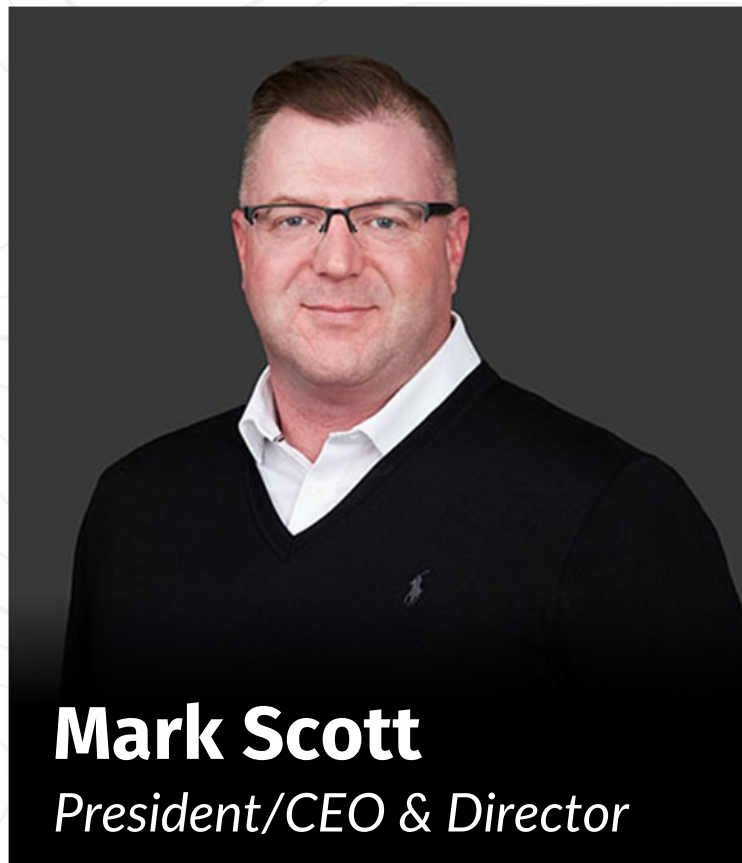
10,666,667 @ (11.6%)





GANDER
GOLD

Management Team



CSE:GAND | OTCQB:GANDF

GanderGold.com

Exploration Leadership Team



Mark Scott

President/CEO & Director

Mark has two decades of experience in all facets of surface and underground mining, metallurgical processing, and associated service and support functions, within multiple mining majors including Vale Canada where he served as Head of Manitoba Operations through 2018 and successfully managed an annual combined OPEX and CAPEX budget of \$500 million (U.S.) and a workforce of 1,875.



Ian Fraser, P.Geo.

VP Exploration

An expert in geological models and structural settings with more than three decades as an exploration geologist, Ian has been directly involved in the discovery of six gold deposits in North and South America with three of those having gone into production.



Shawn Ryan

"The Prospector" & Technical Advisor

A global leader in his field, Shawn's staking prowess and his prospecting instincts and techniques have been instrumental in finding new multi-million ounce gold deposits and triggering gold rushes in both the Yukon and now Newfoundland.



Isaac Fage

GroundTruth Exploration

Isaac was a co-founder of GroundTruth in 2010. A year later he successfully coordinated one of the largest regional soil programs ever conducted on the planet. His logistics expertise has helped fuel the Newfoundland exploration team.

Exploration Leadership Team



Mike Middleton

“Gold Hunter”

A veteran prospector with extensive experience in Northwest B.C., Mike and his highly experienced team bring a powerful added dimension to Gander Gold’s prospecting efforts each spring and fall, prior to and just after the summer exploration season in the Eskay Camp.



Terry Coughlan, P.Geo

Director

The founding CEO of producer GoGold Resources, Terry has a nearly 40-year record of success in mineral exploration, operations and corporate development. Notably, each of the last three public companies with which he’s been involved have developed a producing mine.



Kate McLaughlin, P.Eng.

Director

Kate has 25 years of technical, operations and leadership experience with Noranda, Falconbridge, Xstrata, Vale and Stantec. As the Innovation Leader for Stantec’s Energy & Resources operating unit, she developed unique approaches and solutions for multiple business lines.



Ronacher McKenzie

Exploration Partner

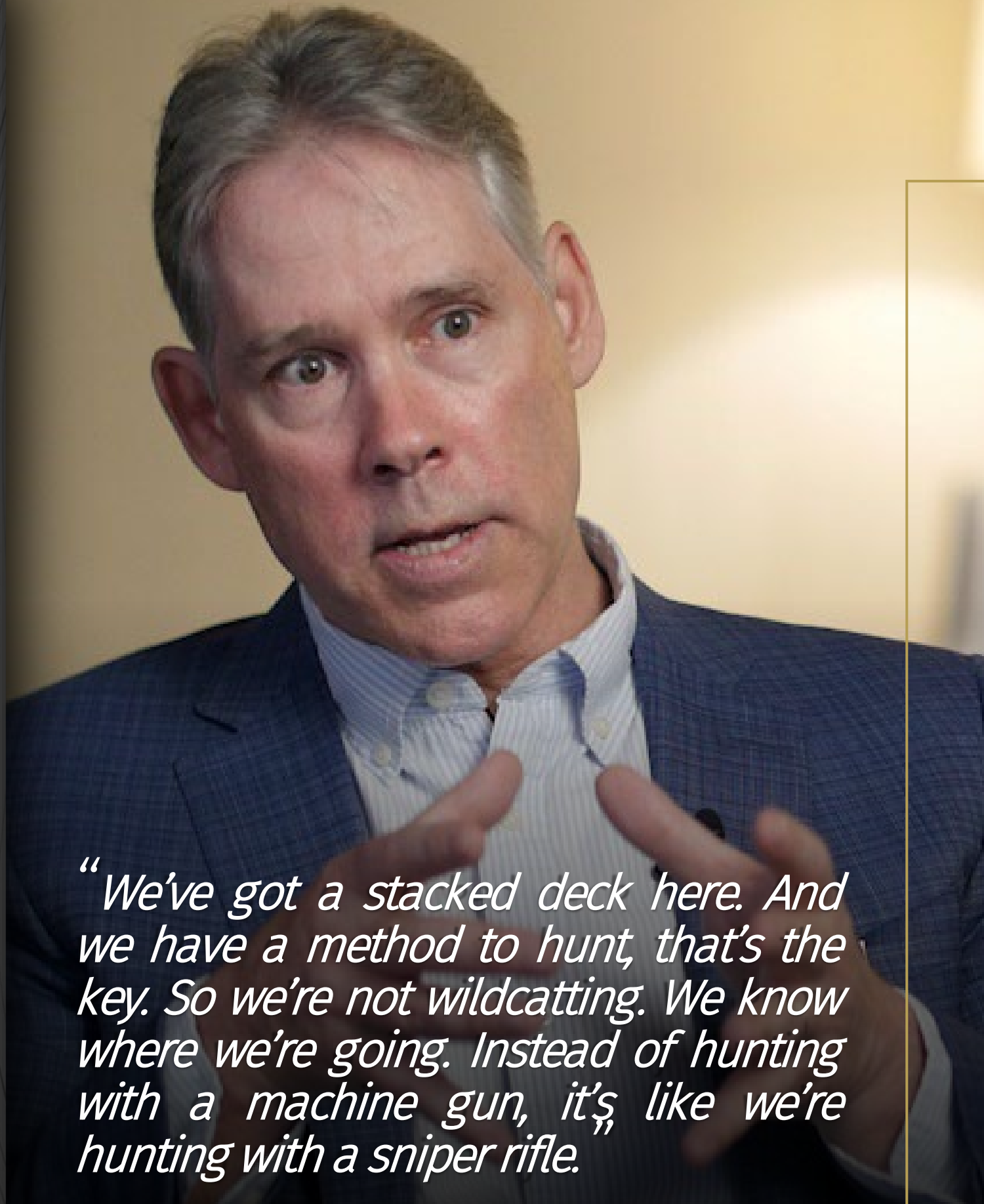
Ronacher McKenzie Geoscience provides Gander Gold with industry leading expertise in data integration, analysis and interpretation, and machine learning. They spearheaded the NI-43-101 Technical Report for Gander North during Gander Gold’s listing process.



NEWFOUNDLAND
GOLD RUSH

Newfoundland & Labrador
Gander Gold Belt

*A Vastly Under-Explored District Delivering Canada's
Newest High-Grade Gold Discoveries*



“We’ve got a stacked deck here. And we have a method to hunt, that’s the key. So we’re not wildcatting. We know where we’re going. Instead of hunting with a machine gun, it’s like we’re hunting with a sniper rifle.”

- Shawn Ryan
Technical Advisor

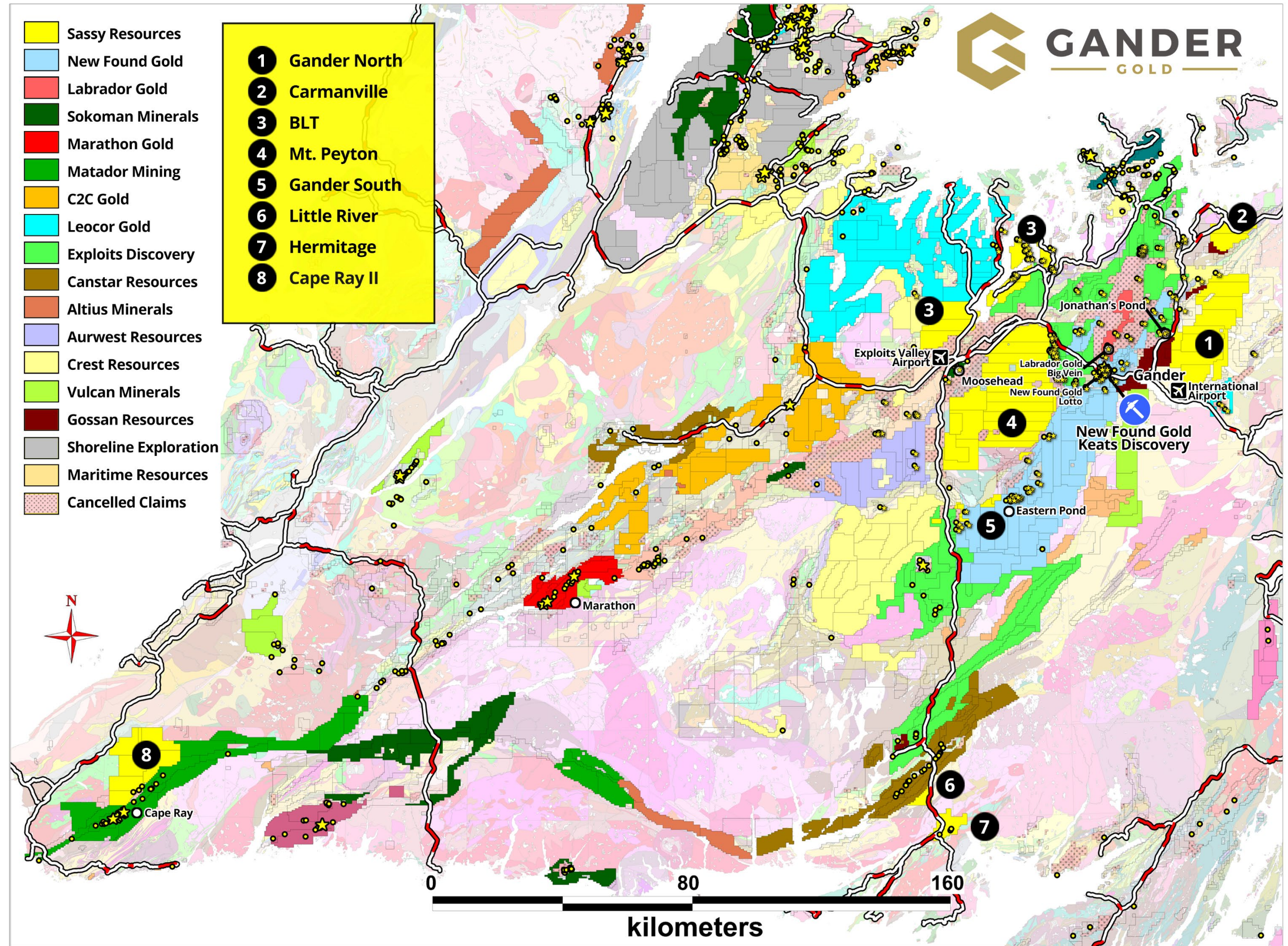
Gander Controls 2,259 Sq. Km **One of District’s Largest Land Packages**

Eight Major High Probability Claim Blocks **Never Previously Drilled**

- Favorable Structures
- The Right Rocks
- Promising Geochemistry
- **First-Ever Drilling in 2023**

Central Newfoundland

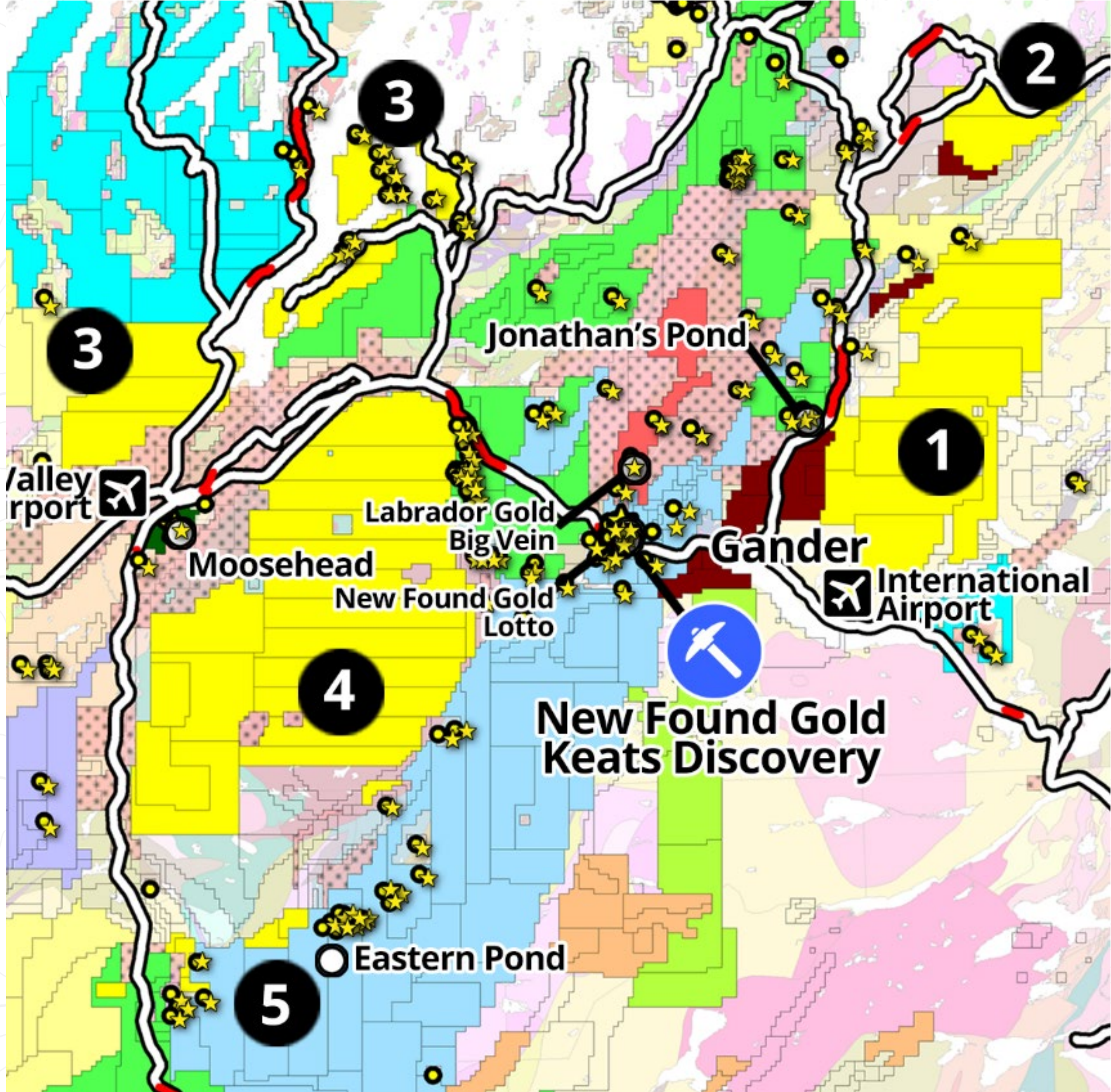
Regional View





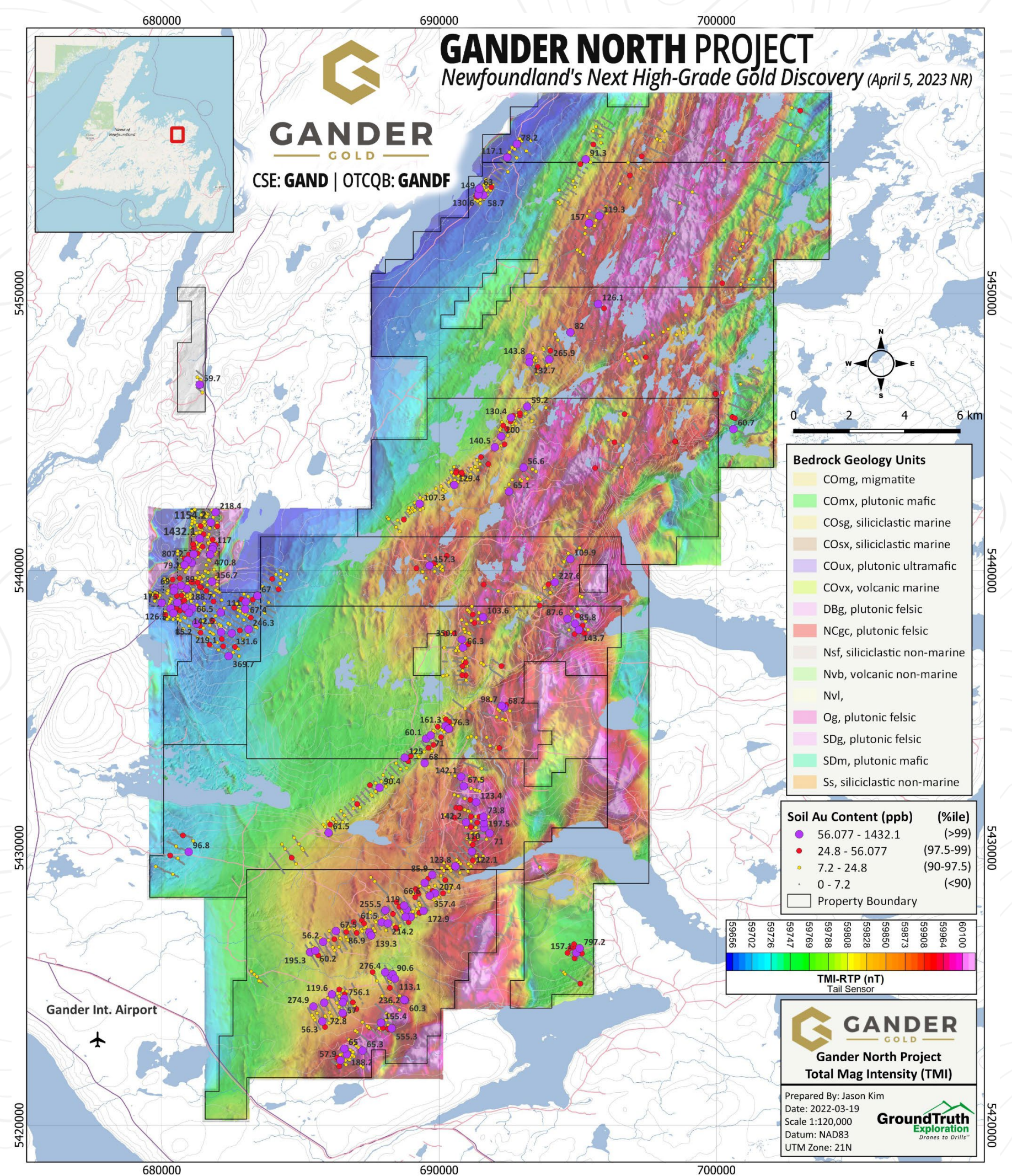
Gander Gold Belt

- Gander Gold holds a dominant land position in an area with relatively easy access
- Gander Gold Belt is highlighted by New Found Gold's spectacular Keats Zone discovery and other developing high-grade zones (Fosterville model)
- 25.6 m grading 146.2 g/t At at Keats Zone plus many other high-grade hits
- Exciting early success at Gander Gold's Gander North Project where extensive gold-in-soil anomalies are coincident with favorable geophysical structures across a 25-km-long east-northeast trend
- Extensive soil sampling, structural interpretation are key throughout the region



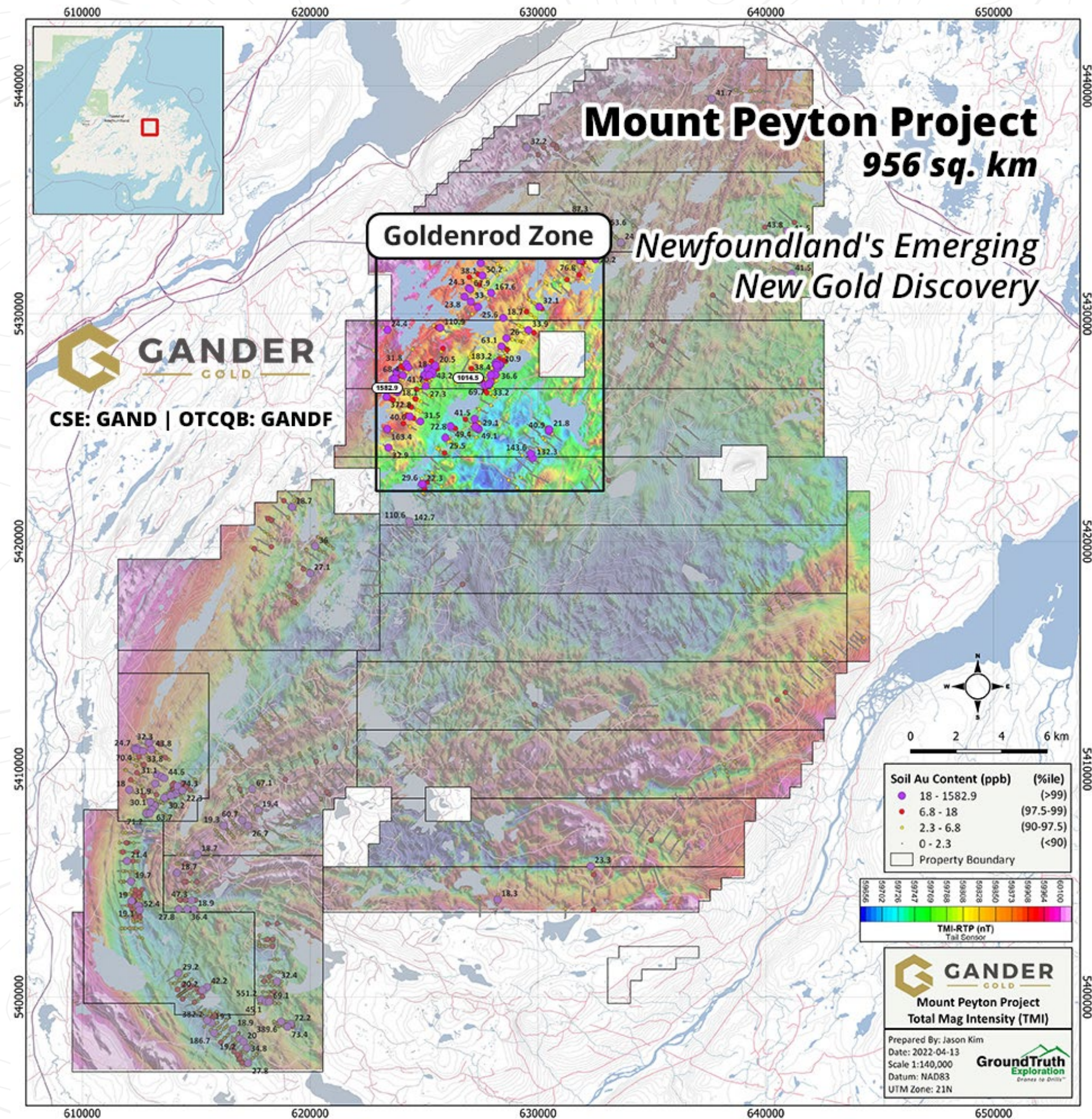
Gander North

- Increasing potential to host Newfoundland's next high-grade gold discovery
- 2023 field season begins in May with crews focusing on prioritizing diamond drilling targets
- No previous drilling ever carried out on this huge land package
- Over 12,000 soil samples collected since 2021, showing multiple anomalous trends and values as high as 1,432 ppb gold



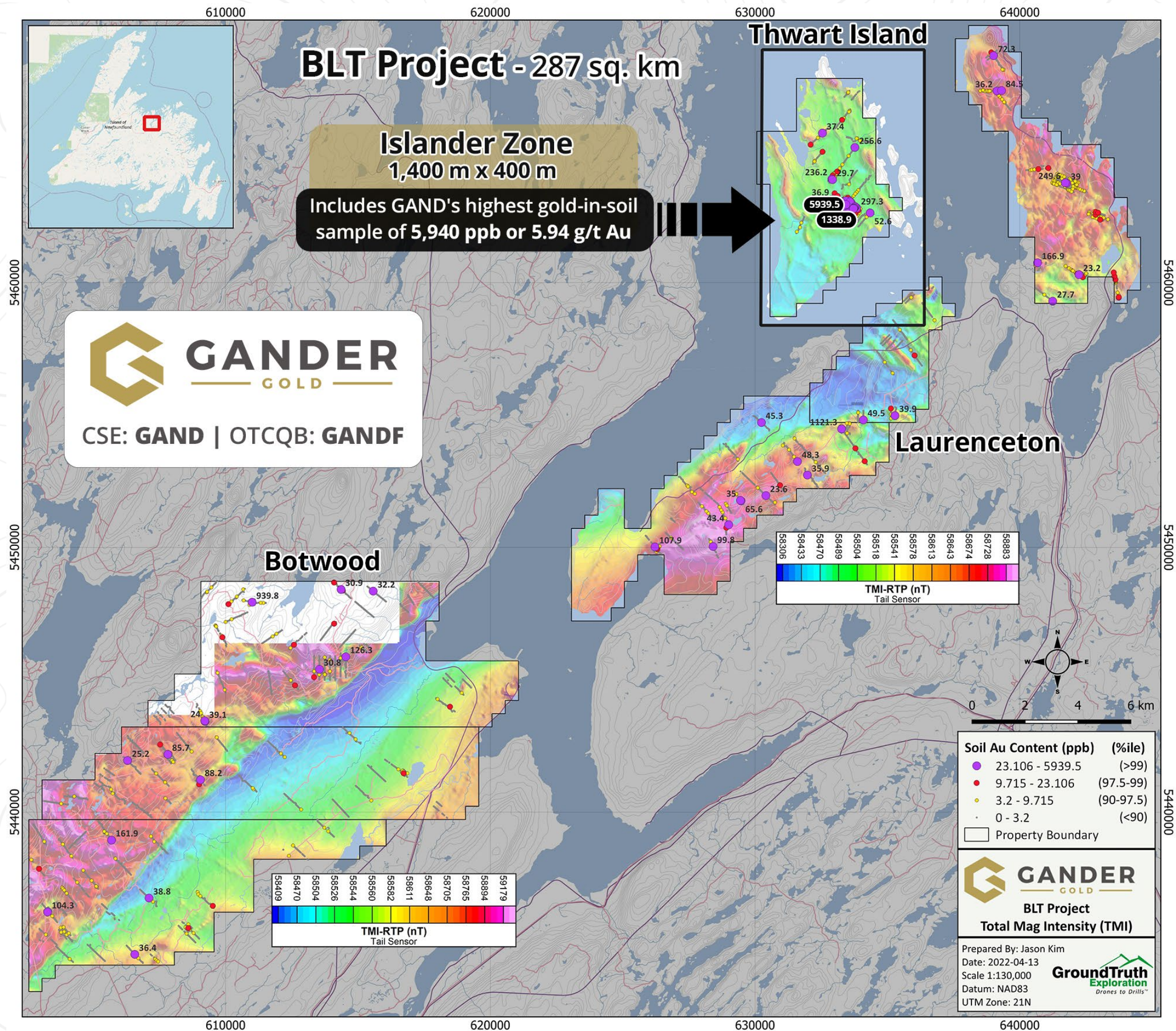
Mount Peyton

- Goldenrod is located 12 km directly east of Sokoman Minerals' Moosehead Project which features five open-ended zones of high-grade gold mineralization
- Approximately 4,020 B and C-horizon soil samples within the Goldenrod Zone (2021 and 2022) show anomalous to extremely anomalous values across the 95 sq. km target area
- Goldenrod has generated the highest grade soil samples at Mount Peyton (**1,583 ppb Au and 1,014 ppb Au**)
- Arsenic, which is a key pathfinder associated with the Moosehead and New Found Gold discoveries, is very anomalous at Goldenrod
- Correlation with NE trending dyke swarms and Au-in soil anomalies at Goldenrod
- Preliminary interpretation suggests the Goldenrod Zone is a typical setting for orogenic gold



BLT Project

- First-ever soil samples at BLT Project define new “Islander Zone” on Thwart Island measuring 1,400 m x 400 m based on 845 samples
- 5.94 g/t Au (5,939.5 ppb) from the Islander Zone is the highest grade soil sample result across any of Gander’s eight Newfoundland projects and 38,941 total soil samples taken in 2021-2022
- Gold-in-soil zone at Islander is coincident with very anomalous arsenic-in-soil which is consistently present across the interpreted strike of the Islander Zone





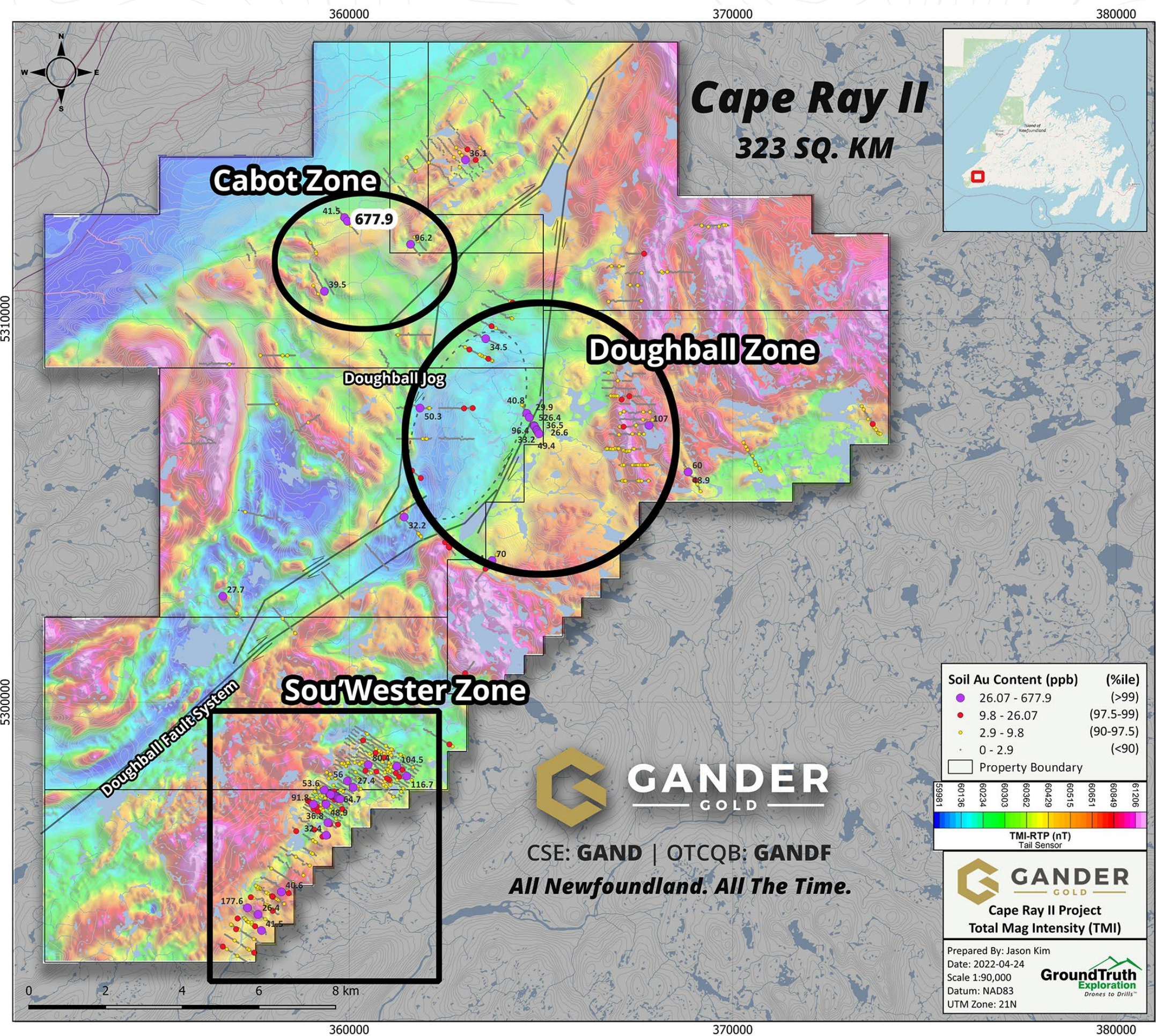
GANDER GOLD

CSE:GAND | OTCQB:GANDF

GanderGold.com

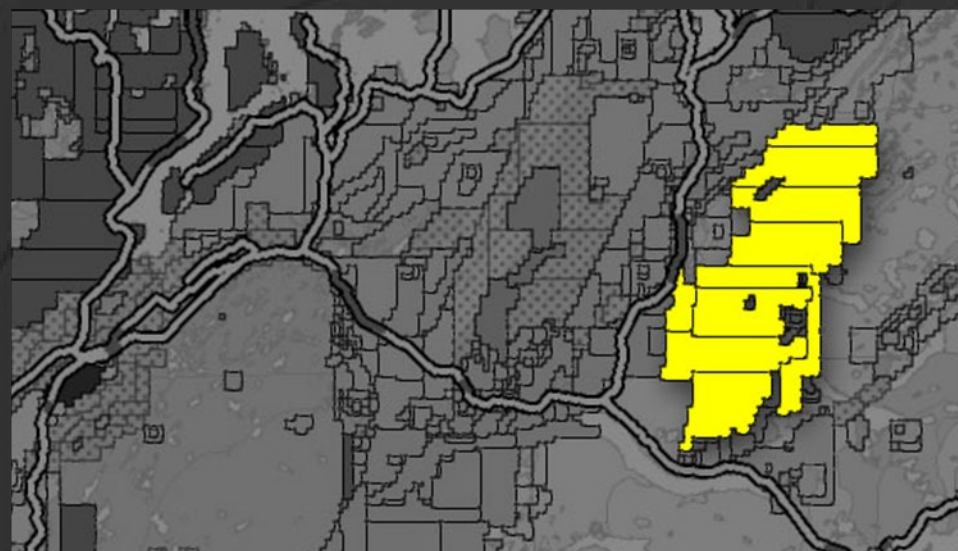
Cape Ray II Project

- Cape Ray II is contiguous to Matador Mining's Cape Ray deposits and occupies deformation zones between two significant tectonic structures, the Long Range/Cabot Fault to the west and the Cape Ray/Valentine Fault to the east which hosts Marathon Gold's multi-million ounce deposit with initial production planned for 2025
- Nearly 4,500 soil samples, geophysics surveys and detailed structural interpretation at Cape Ray II have outlined three large zones of interest - Sou'wester, Doughball Jog, and Cabot
- Doughball Jog, the largest zone covering an area of approximately 30 sq. km, is a sigmoidal-like feature defined by a late granitoid intrusive - it's considered very prospective for high-grade gold mineralization that may have accumulated in deformation zones





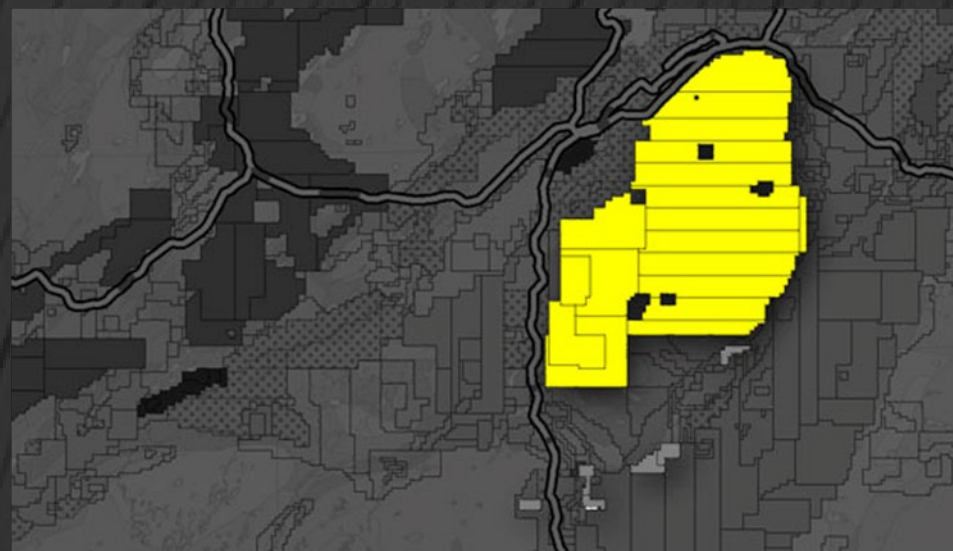
Gander Gold Belt Project Outline



Gander North

485 sq. km

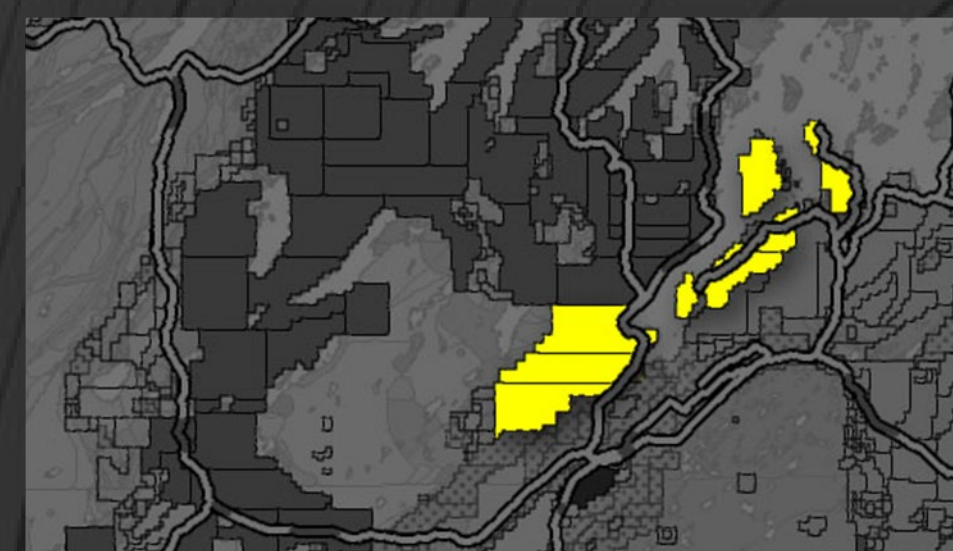
- **Starts 15 km east** of New Found Gold's Keats Zone
- Potential for epithermal-mesothermal type system(s) occurring within the Gander North Project area
- One of most comprehensive grassroots exploration programs in Newfoundland exploration history



Mt. Peyton

955 sq. km

- **Massive land package** in favorable intrusive setting in between New Found Gold's Keats Zone and Sokoman's Moosehead discovery to the west
- Mt. Peyton features extensive southwest-northeast geophysical structures and the newly-identified "Goldenrod Zone" in the northwest corner of the property featuring 13 soil samples >110 ppb Au
- **The under-explored intrusive** and gabbroic rocks found at Mount Peyton are commonly associated with gold mineralization



BLT

287 sq. km

- BLT gives Gander Gold exposure to a large unexplored section of the Northern Arm Fault, the same fault system that hosts Marathon Gold's multi-million ounce gold resource to the southwest
- "Islander Zone" gold-in-soil discovery measures 1,400 m x 400 m based on 845 samples with **top 10 samples averaging 852.9 ppb Au (0.85 g/t)**, coincident with very anomalous arsenic-in-soil
- **5.94 g/t Au (5,939.5 ppb)** from the Islander Zone is the highest grade soil sample result across any of Gander's eight Newfoundland projects and 38,941 total soil samples taken in 2021-2022;



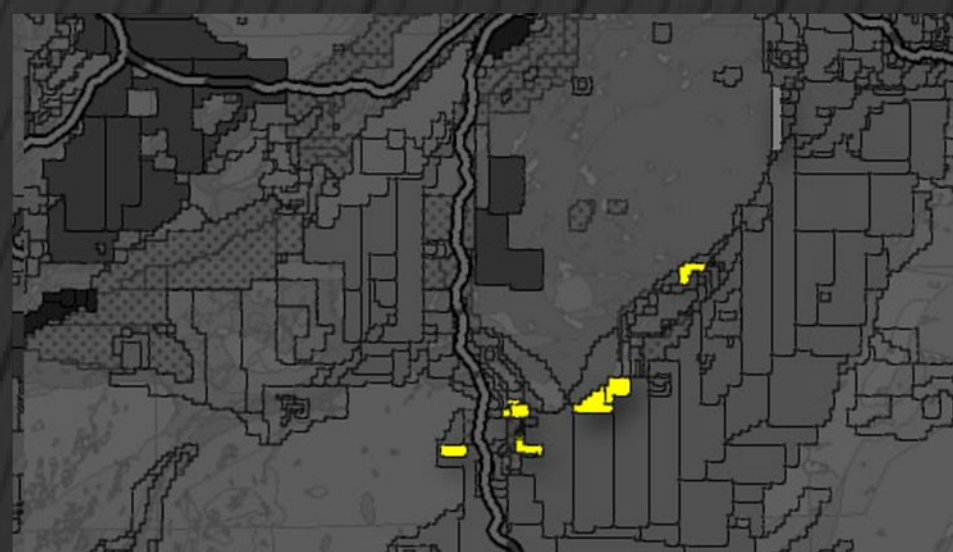
Gander Gold Belt Project Outline



Carmanville

84 sq. km

- 65 km north of Gander, Carmanville extends out to the west from the GRUB Line
- Along the GRUB Line there are multiple gold showings that are all either sitting along the GRUB Line contact or just inboard (west) by 3-4 km within a magnetic low
- Carmanville is anomalous with the same geochemical elements as the H-Pond and Jonathan's Pond targets to the south near Gander



Gander South

34 sq. km

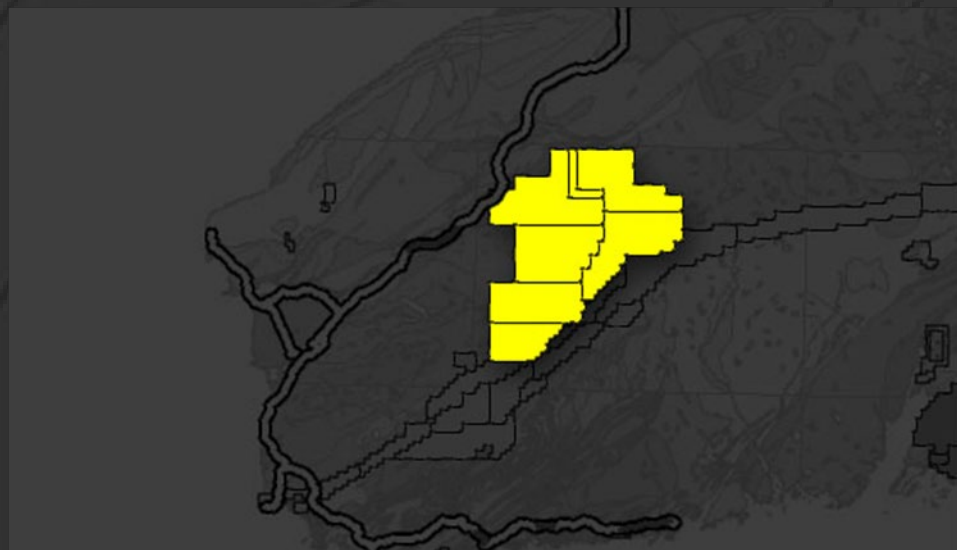
- Highly strategic claims along a favorable structure (Dog Bay Line) immediately west of New Found Gold's Eastern Pond discovery in the southern part of its Queensway Project
- Claims are located on strike with the Beaver Brook antimony mine and are within as little as 5 km of Eastern Pond discovery defined by subcrop and till sample results over a minimum strike length of 4 km
- An encouraging historic gold and arsenic stream silt anomaly at Gander South has yet to be investigated



Mike Middleton at Carmanville



Regional Project Outline



Cape Ray

323 sq. km

- **Major land package** adjoining one of the highest-grade open-pit projects in the world, Matador Mining's Cape Ray deposits
- **Compilation and reinterpretation** of limited historical data suggests that Gander Gold's Cape Ray II is much more prospective for gold mineralization than previously believed (ideal host rocks, favorable structures, and soil/till anomalies with showings)
- **High priority** will be given to a previously unrecognized fault structure veering off from Matador's Cape Ray deposits onto Gander Gold's ground



Little River

63 sq. km

- **Road accessible** and adjoins eastern border of Canstar's flagship Golden Baie Project where drilling is in progress
- **Several cross faults** extend from within the Little River Belt into the Little River Property - cross faults are interpreted to be an important control on mineralization in the Little River showings
- **Historic work** shows gold-in-soil plus gold/arsenic till and lake sediment anomalies



Hermitage

27 sq. km

- **Strategic location** along the regional Hermitage suture and related cross faults where there is much increased exploration activity; road accessible and no previous drilling
- **These structures** are the fundamental contacts between the Gander tectonic zone and the Avalon tectonic zone to the east, a favorable structural environment for gold deposits
- **Property features** extensive siliceous alteration zones exceeding 600 meters in length along Abbott's Brook based on historic Noranda reports



Why Invest in Gander Gold?

Dynamic Leadership



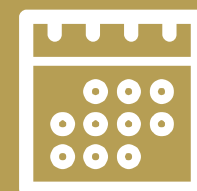
Discovery Leverage



Compelling Share Structure



Financial Strength



Year-Round Exploration



Market Savvy

100% Newfoundland Focused



GANDER
— GOLD —

CSE: **GAND** | OTCQB: **GANDF** | **GanderGold.com**

Terry Bramhall

Gander Gold – Corporate Communications

1.604.833.6999 (mobile)

1.604.675.9985 (office)

investors@gandergold.com

All Newfoundland. All the time.